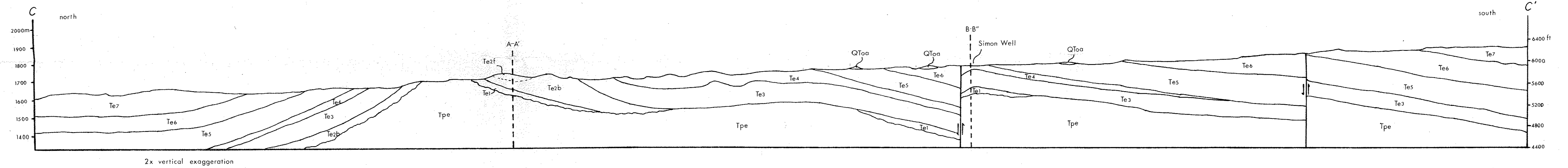
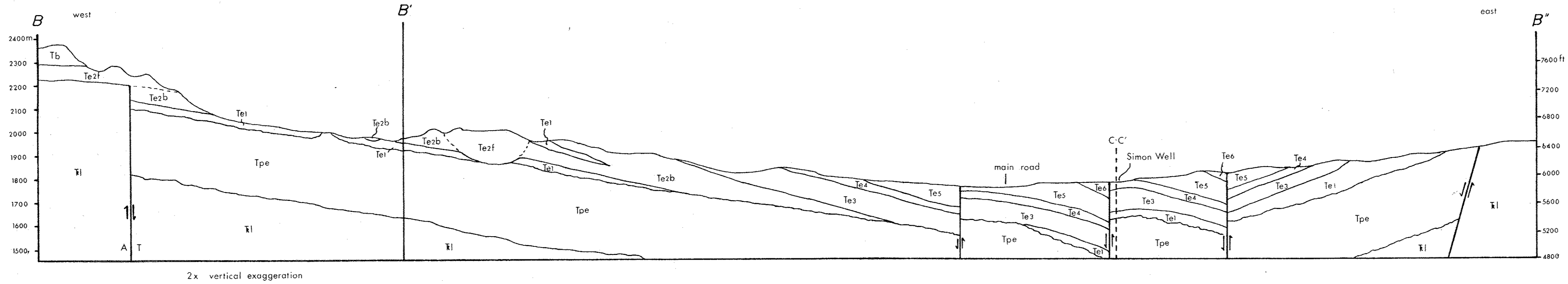
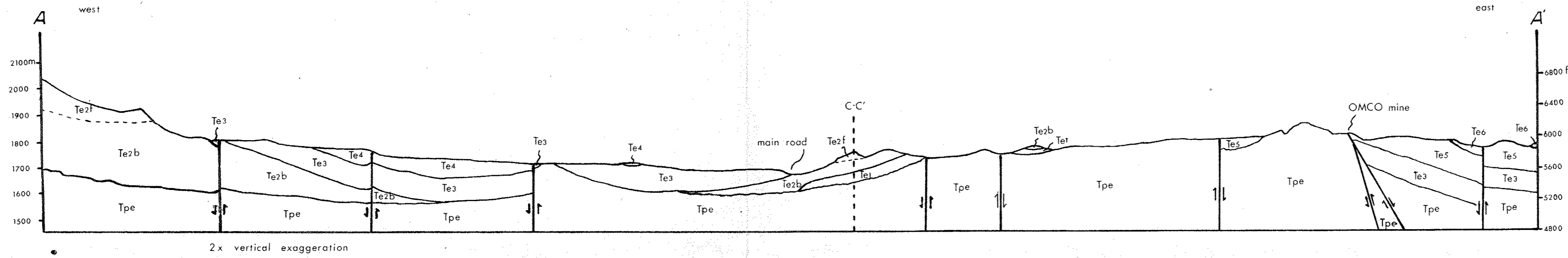


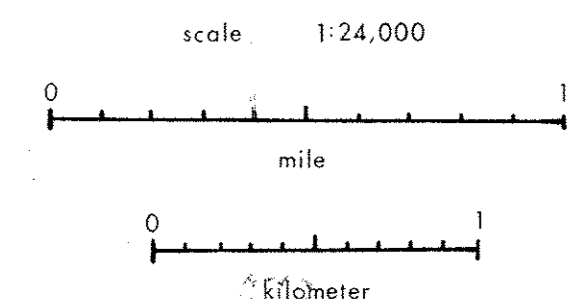
STRUCTURE CROSS SECTIONS OF STEWART VALLEY, MINERAL AND NYE COUNTIES, NEVADA



EXPLANATION

- QTaa Older Alluvium
- Tb Basalt
- Te7 sandstone / vitric tuff
- Te6 sandstone / carbonate
- Te5 claystone / mudstone
- Te4 shale
- Te3 sandstone / claystone
- Te2f volcanic flows
- Te2b volcanic breccia
- Te1 claystone
- Tpe Pre-Esmeralda volcanics
- Li Luning Formation

FAULT arrows show direction of movement on dip-slip faults; T is toward and A is away from observer on strike-slip faults



See Plates 1 or 2 for lines of sections.

B. L. Clausen 1983